

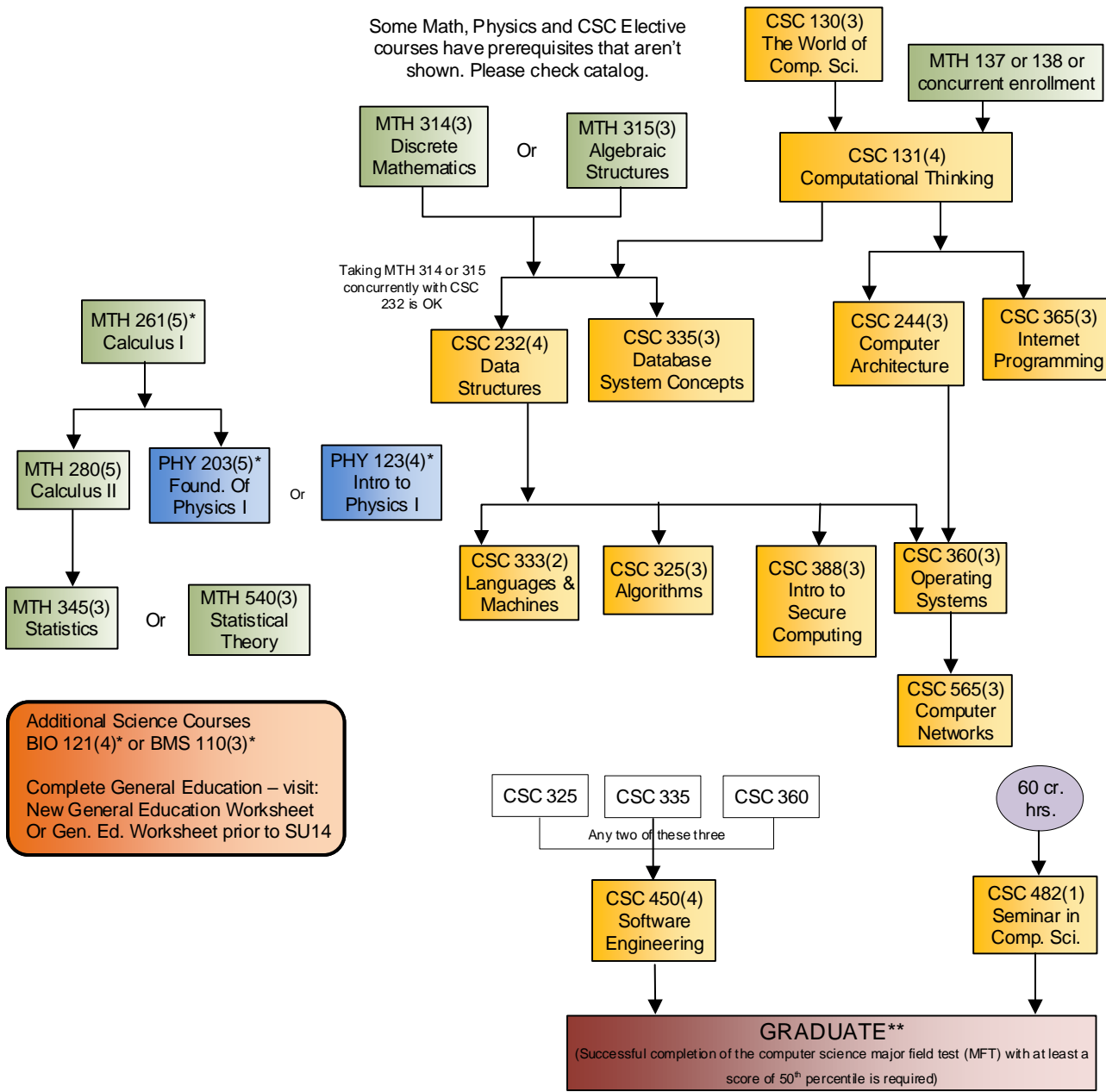
Missouri State University Computer Science

Computer Science Option



Declare your minor (usually Math) by e-mailing registrar@missouristate.edu.
Use my.missouristate.edu to register and make changes to your schedule.

Some Math, Physics and CSC Elective courses have prerequisites that aren't shown. Please check catalog.



Choose 9 hours from among:

- CSC 300 (1) D
 - CSC 399 (1-3) F, S, SU
 - CSC/MTH 421 (3) D
 - CSC/MTH 422 (3) D
 - CSC 455 (3) F
 - CSC 515 (3) S
 - CSC 521 (3) D
 - CSC 525 (3) F
 - CSC 535 (3) D
 - CSC 538 (3) D
 - CSC 540 (3) S
 - CSC 545 (3) S
 - CSC 567 (3) S
 - CSC 590 (1-4) D
 - CSC 596 (1-3) D
- D = Demand, F = Fall, S = Spring, SU = Summer
- Note:** No more than 3 hours can count from CSC 399 and no more than 3 hours can count from CSC 596.

- Service Learning in CS
- Cooperative Education
- Numerical Analysis I
- Numerical Analysis II
- Software Quality Assurance
- Advanced Internet Programming
- Compiler Construction
- Computer Graphics
- Data Mining
- Parallel and Distributed Computing
- Intro. to Artificial Intelligence
- Computer Speech, Music & Images
- Mobile Computing Applications
- Adv. Topics in Computer Science
- Special Readings

The Computer Science major at Missouri State has a strong mathematics emphasis. Students interested in a different minor should consider the Software Development option of the Computer Science degree.

For further information about Computer Science at Missouri State please contact:

Computer Science Department
Missouri State University
901 S. National
Springfield MO 65897
(417) 836-4157

ComputerScience@missouristate.edu
www.cs.missouristate.edu

Additional Science Courses
BIO 121(4)* or BMS 110(3)*

Complete General Education – visit:
New General Education Worksheet
Or Gen. Ed. Worksheet prior to SU14

**To graduate at least 120 hours of courses must be taken including at least 40 hours of courses numbered 300 and above.



The Computer Science program is accredited by the Computing Accreditation Commission of ABET, www.ABET.org.

*May also count toward General Education requirements