

Missouri State University Computer Science

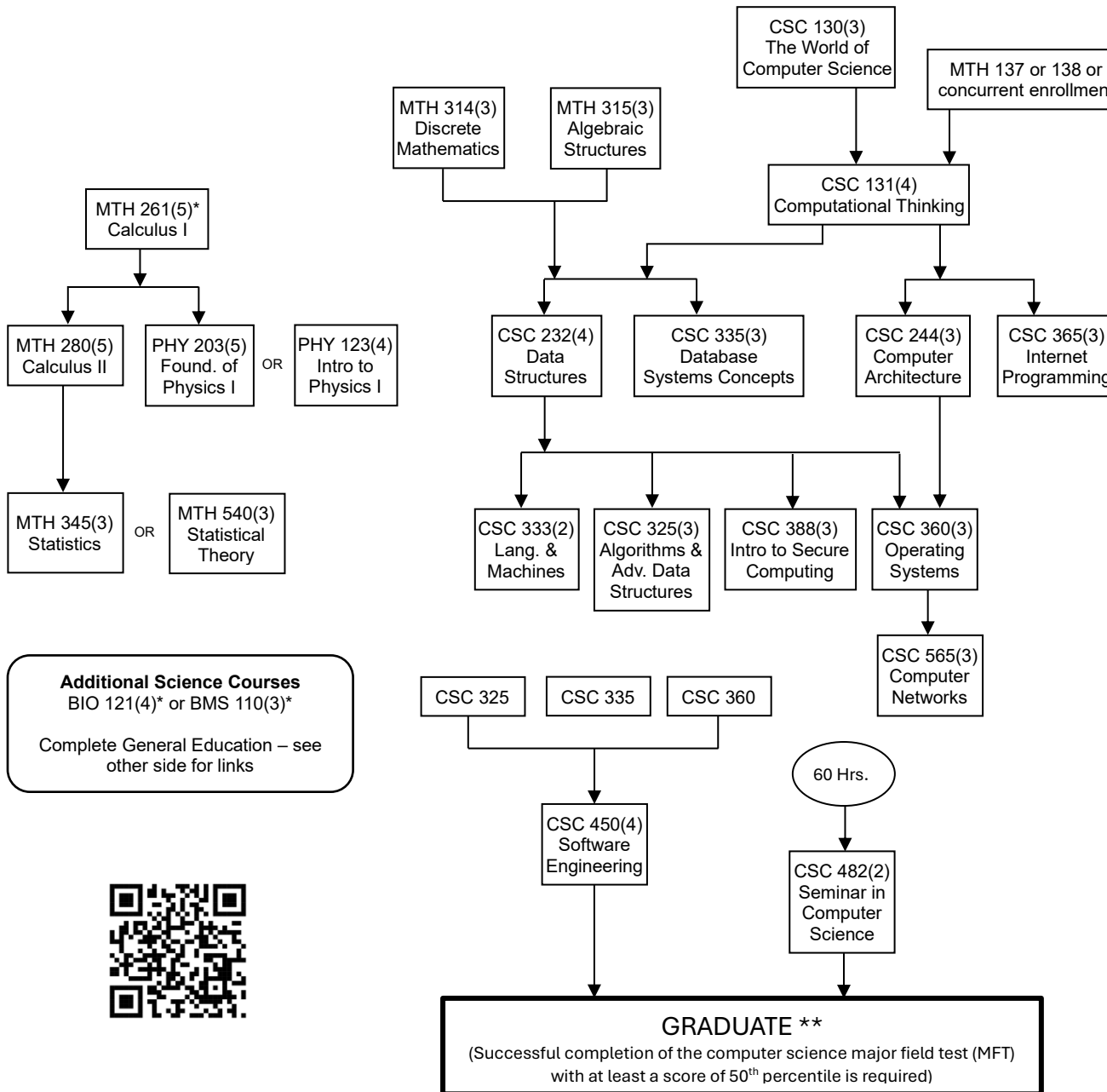
Some Math, Physics, and CSC Elective courses have prerequisites that aren't shown. Please check catalog.



Computer Science Option

Declare your minor (usually Math) by e-mailing registrar@missouristate.edu.

Use my.missouristate.edu to register and make changes to your schedule.



Additional Science Courses
BIO 121(4)* or BMS 110(3)*
Complete General Education – see other side for links



*May also count toward General Education Requirements

** To graduate at least 120 hours of courses must be taken including at least 40 hours of courses numbered 300 and above

- Choose 9 hours from among:
- | | |
|----------------------|-----------------------------------|
| CSC 300 (1) D | Service Learning in CS |
| CSC 330 (3) D | Intro to Data Science |
| CSC 388 (3) D | Intro to Secure Computing |
| CSC 399 (1-3) F,S,SU | Cooperative Education |
| CSC/MTH 421 (3), D | Numerical Analysis I |
| CSC/MTH 422 (3), D | Numerical Analysis II |
| CSC 455 (3) F | Software Quality Assurance |
| CSC 515 (3) S | Advanced Internet Programming |
| CSC 521 (3) D | Compiler Construction |
| CSC 525 (3) F | Computer Graphics |
| CSC 526 (3) D | Methods of Optimization |
| CSC 534 (3) S | Big Data Analytics |
| CSC 535 (3) D | Data Mining |
| CSC 538 (3) D | Parallel & Distributed Computing |
| CSC 540 (3) S | Intro. to Artificial Intelligence |
| CSC 545 (3) S | Computer Speech, Music & Images |
| CSC 567 (3) S | Mobile Computing Applications |
| CSC 590 (1-4) D | Adv. Topics in Computer Science |
| CSC 596 (1-3) D | Special Readings |
- D = Demand, F = Fall, S = Spring, SU = Summer
Note: No more than three hours can count from CSC 399 and no more than 3 hours can count from CSC 596.

The Computer Science Major at Missouri State has a strong mathematics emphasis. Students interested in a different minor should consider the Software Development option of the Computer Science degree.

For further information about Computer Science at Missouri State please contact:
Computer Science Department
Missouri State University
901 S. National
Springfield MO 65897
(417) 836-4157

ComputerScience@missouristate.edu
www.cs.missouristate.edu



The Computer Science program is accredited by the Computing Accreditation Commission of ABET, www.ABET.org