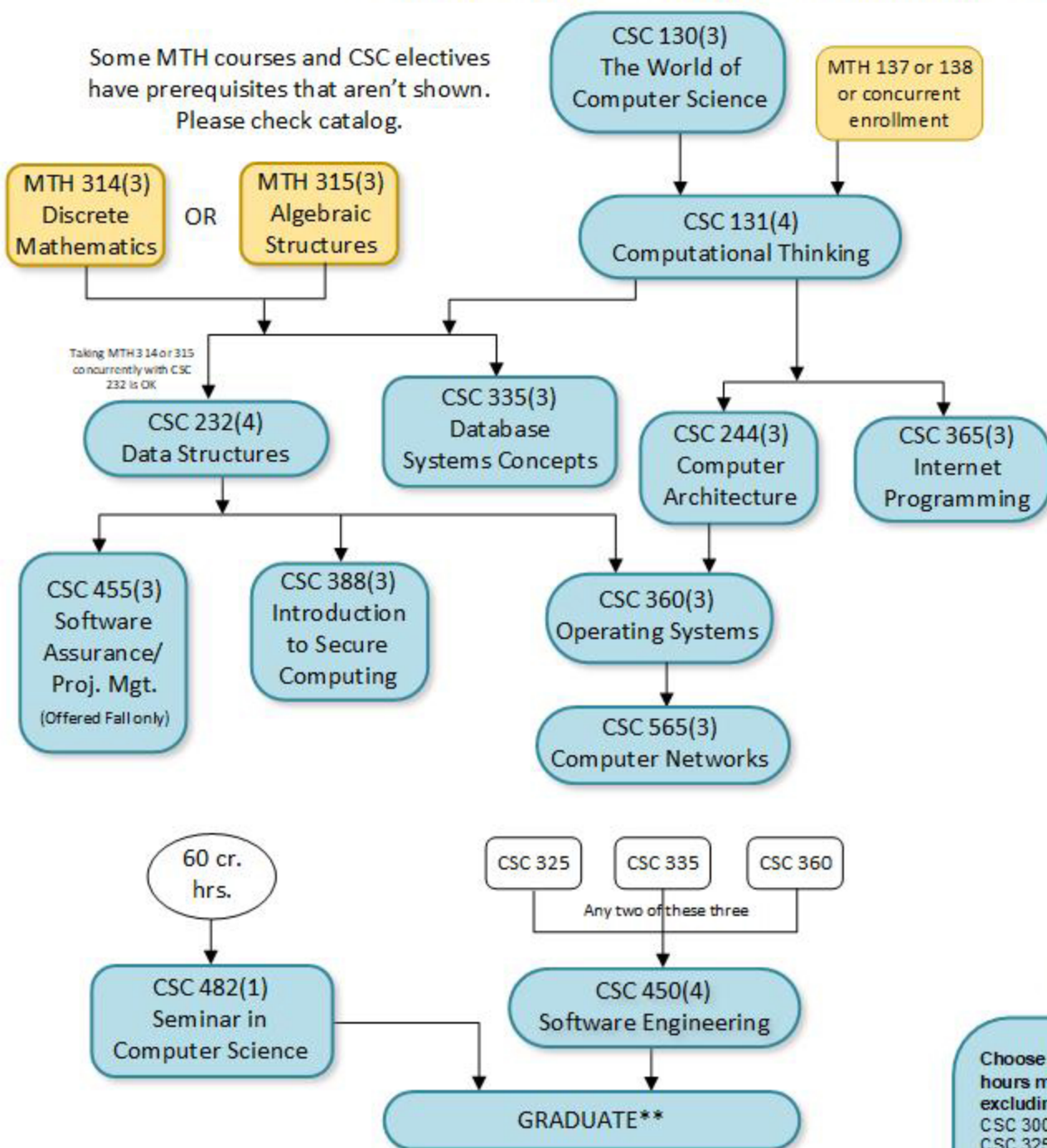


# Missouri State University Computer Science "Software Development" Option

Some MTH courses and CSC electives have prerequisites that aren't shown. Please check catalog.



**MINOR is required**  
See <http://www.missouristate.edu/registrar/catalog/majorsminors.htm#Minors>  
  
Declare your minor by e-mailing registrar@missouristate.edu  
  
Use my.missouristate.edu to register and make changes to your schedule.

**One Course in:**  
MKT 350(3)      PSY 305(3)  
MGT 340(3)      PSY 481(3)  
COM 315(3)  
*Other courses may be acceptable with department approval.*

Choose one course from each group (at least one of the courses with a lab)  
A. BIO 121(4)\*, BMS 110(3)\*, BMS 110/BMS 111(4)\*  
B. CHM 116(4)\*, CHM 116/CHM 117(5)\*, CHM 160(4)\*, CHM 160/CHM 161(5)\*, GLG 110(4)\*, GLG 171(3)\*, GRY 135(4)\*, GRY 142(4)\*, PHY 123(4)\*, PHY 203(5)\*, AST 113(3)\*, AST 114(4)\*, and AST 115(4)\*.

**Other GenEd**  
ECO 165(3)\*      PSY 121(3)\*      ENG 321(3)\*

\*Each of these courses may also count towards or satisfy General Education requirements. Other courses may be acceptable with departmental approval.

**Choose 12 hours from among these courses: (3 of these hours must be from courses numbered 500 or higher excluding CSC 596)**

CSC 300 (1)D	Service Learning in CS
CSC 325 (3) F,S	Algorithms & Data Structures
CSC 333 (2) F,S	Languages & Machines
CSC 399 (1-3) F,S, SU	Cooperative Education
CSC 515 (3) S	Advanced Internet Programming
CSC 521 (3) D	Compiler Construction
CSC 525 (3) F	Computer Graphics
CSC 535 (3) D	Data Mining
CSC 538 (3) D	Parallel and Distributed Computing
CSC 540 (3) S	Intro. to Artificial Intelligence
CSC 545 (3) S	Computer Speech, Music & Images
CSC 567 (3) S	Mobile Computing Applications
CSC 590 (1-4) D	Adv. Topics in Computer Science
CSC 596 (1-3) D	Special Readings

D = Demand, F = Fall, S = Spring, SU = Summer  
Note: No more than 3 hours can count from CSC 399 and no more than 3 hours can count from CSC 596.

**\*\*To graduate at least 120 hours of courses must be taken including at least 40 hours of courses numbered 300 and above**

For further information about Computer Science at Missouri State please contact:  
  
Computer Science Department  
Missouri State University  
901 S. National  
Springfield MO 65897  
(417) 836-4157  
  
ComputerScience@missouristate.edu  
[www.cs.missouristate.edu](http://www.cs.missouristate.edu)

